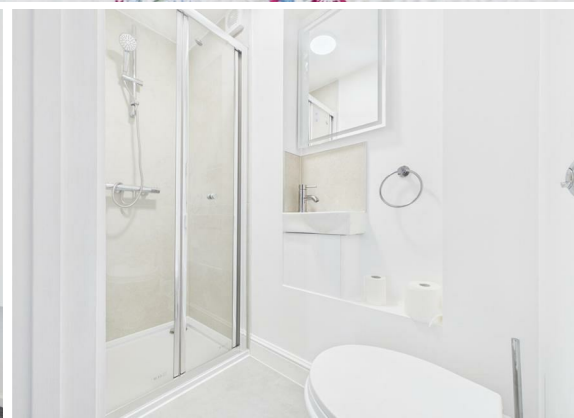
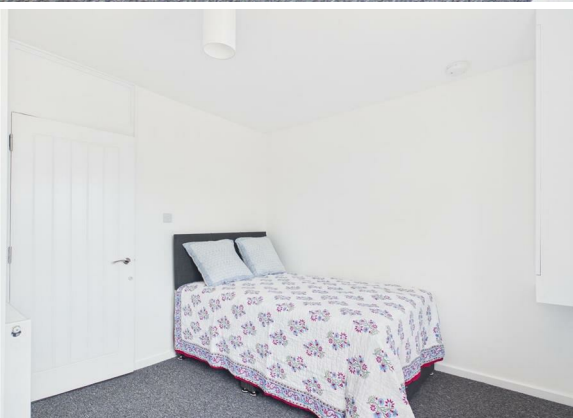


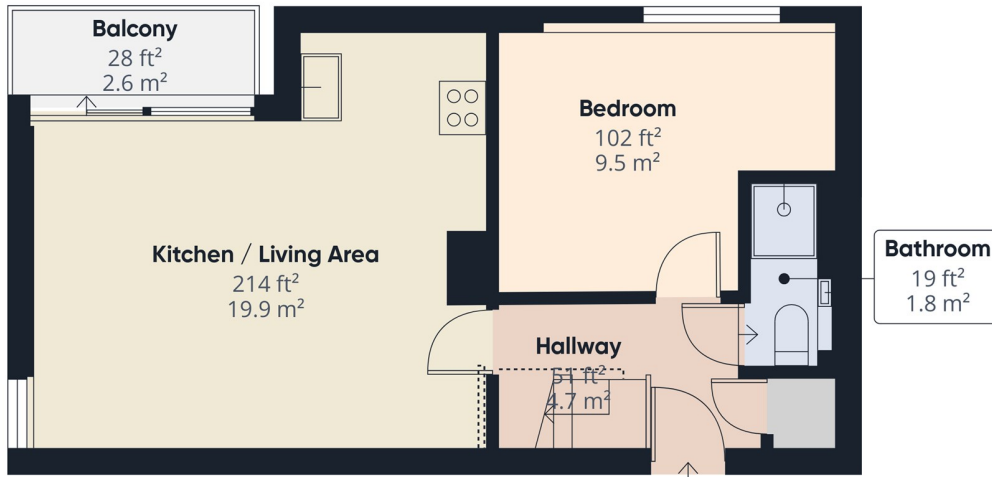


4 Bed
Apartment
located in

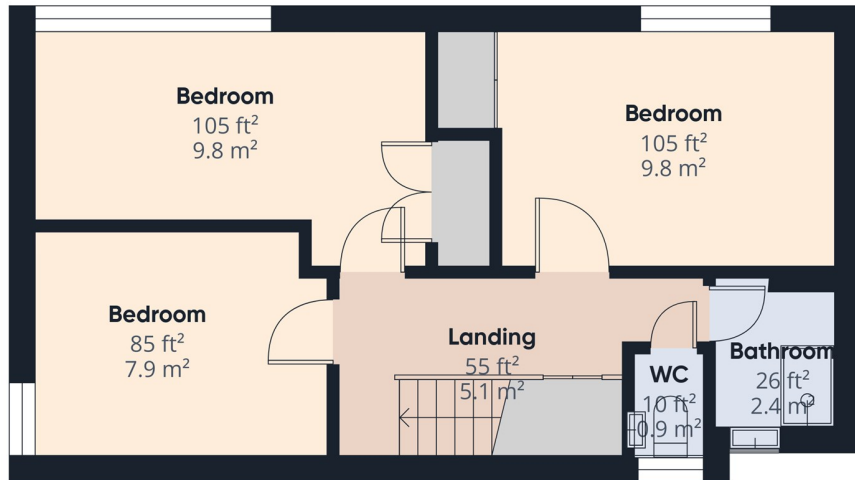
£4,400 Per Month



ROCKET



Floor 0



Floor 1



Approximate total area⁽¹⁾

799 ft²
74.2 m²

Balconies and terraces

28 ft²
2.6 m²

Reduced headroom

13 ft²
1.2 m²

(1) Excluding balconies and terraces

Reduced headroom

..... Below 5 ft/1.5 m

Calculations reference the RICS IPMS 3C standard. Measurements are approximate and not to scale. This floor plan is intended for illustration only.

GIRAFFE360

DIRECTIONS

CONTACT

265-269 Wimbledon Park Road
Southfields
London
SW19 6NW

E: info@rocketpm.co.uk

T: 02079594128

<https://www.rocketpm.co.uk/>

